

On the beat in

Hereford Southside & Rural

Safer Neighbourhood Team Newsletter

Early December 2025

Where we work



Team contact details

Team email: herefordsouthside.snt@westmercia.police.uk

Safer Neighbourhood Officer: PC 21260 Martin Gillett **Mobile:** 07970 544262

Safer Neighbourhood Officer: PC 21946 Jack Davies **Mobile:** 07817 158224

Safer Neighbourhood Officer: PC 2347 Lyn Johnson **Mobile:** 07773 048377

Safer Neighbourhood Officer: PC 22088 Dan Ovel **Mobile:** 07929 721340

Safer Neighbourhood Officer: PC 21198 Brian Gosson **Mobile:** 07973 846336

Police Community Support Officer: PCSO 6324 Carol Marsh **Mobile:** 07890 524667

Police Community Support Officer: PCSO 40259 Hayley Warne **Mobile:** 07773 052560

Police Community Support Officer: PCSO 40272 Lewis Thomas **Mobile:** 07773 051508

*We are happy to receive calls from Members of The Public, however, please **do not** use these to report crimes and/or incidents. For more information on reporting a crime/incident please go to www.westmercia.police.uk and select 'Report' or call 999 (Emergency) / 101 (Non-Emergency)*

In this edition

- Electric Scooters
 - Christmas Grotto
 - Op Christmas Presence/Op Limit
 - Bike Theft
 - Parcel Security
 - Fit and Fed Christmas Special
 - NHM
-

Electric Scooters

You can legally buy electric scooters in the UK, but you cannot use them on public roads, cycle paths, or pavements. You may only use electric scooters on private land with the landowner's permission. This is because electric scooters are legally classified as motor vehicles and must be taxed, insured, licensed, and have a valid MOT certificate. They must also have a number plate, indicators, and visible rear lights. Since most electric scooters do not have these features, they cannot be legally used on UK roads

What happens if the police stop you? You will be informed about the law, you may be asked to take the scooter home, and you could risk having your scooter confiscated.

Depending on the severity of the offence, you could be fined:

- £300 and 6 penalty points for driving without insurance.
- £100 and 3–6 penalty points for driving without a licence.

Other offences you should be aware of, which also carry fines, include:

- Riding on the pavement – £50 fine
- Using a mobile phone while riding – £200 fine and 6 penalty points
- Running a red light – £100 fine and possible penalty points

If you are caught riding your electric scooter while over the legal alcohol limit, you will be penalised in the same way as someone driving a car under the influence. This includes a court-issued fine, a driving ban, and the possibility of imprisonment. Electric scooters and antisocial behaviour If you use an electric scooter in an antisocial manner in public, you risk having it seized under Section 59 of the Police Reform Act



Christmas Showcase Day



The team at Southwey wanted to share their Christmas excitement with everyone by opening the cars and vans to Santa's elves and yourselves.

The members of the team will have some "Be Bright, Be Seen" items to share with those of you that ride cycles, run or walk a dog in the evening or early morning.

Come along from 1pm til 3pm

Op Christmas Presence/Op Limit

🚗 Throughout the month of December and early January, roads policing patrols along with SNT's will be increasing on the lookout for those who think "I've only had 2" is ok to drive.

The National alcohol limit is **35 mg** per 100 ml of breath

The national drug limit can be as low as **1mg** per litre of blood

🚗 Drink / Drug driving and road safety remain a key priority for West Mercia Police and there is perceived, and historical data both locally and nationally to suggest that there is an increase in drink / drug driving offences throughout the winter period, with increases around the festive period.



Drink Drivers

- Predominately male
- Age range 25 - 59
- 68% of casualties involved in drink-drive collisions are male.
- Using road networks (30mph)

Drug Drivers

- predominantly male
- age range – 18 to 35yrs
- will drive throughout the day – not limited to general socialising hours
- more likely to be travelling alone
- high re-offending rate
- links to other criminality – much more likely to be known for other matters

Over the past three years across our three counties there have been 13 fatalities and 132 serious injuries on the roads where alcohol has been a contributory factor. An additional 24 fatalities and 100 serious injuries have occurred involving drugs.

🚗 "Road Safety and Roads Policing Strategy – Driving forward to 2025" our collective aim is to reduce the frequency, and severity of incidences of injury, and fatalities on our road network.



📞 If you suspect someone or know of someone that is drink driving, Report it!

999 in emergencies 📞

Bike Theft

There has been a recent increase in the theft of push bikes – to help protect your bike from theft, here are some tips:

- **DOUBLE LOCK IT** - Using two locks slows thieves down and makes your bike less of a target. Use two quality locks, at least one of which is a D-lock. Thieves are less likely to carry multiple tools, so use two different types of lock if possible.

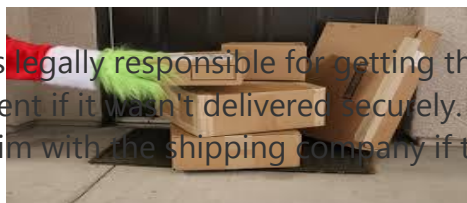
- **LOCK THE LOT** - Lock the frame and both wheels to a secure cycle stand.
- **SECURE IT** - Secure your bike as close to the stand as possible to give any thieves little or no room to manoeuvre.
- **TAKE REMOVEABLE PARTS WITH YOU** - Take parts that are easy to remove with you, such as wheels, lights, baskets or the saddle. Or use locking skewers or nuts which can increase security by securing the bike's components to the frame permanently.
- **PARK SECURELY** - Lock your bike at recognised secure cycle parking. It should be well lit and covered by CCTV.
- **REGISTER IT** - Register your frame number on a national bike registration database approved by Secured by Design. The frame number is usually found underneath the bike between the pedals or where the back wheel slots in. If your bike is ever stolen and recovered by the police, it can be traced back to you
- **MARK IT** - Get your bike security marked. It's a highly effective, visible deterrent to bike thieves. They know that if they are caught with a registered bike, the owner can be traced and they will be arrested. Security marking products can be found at Secured by Design.
- **TAKE A PHOTO!**
- **REMEMBER SAFETY BEGINS AT HOME** - Take the same care to lock your bike securely at home as you would on the street. Avoid advertising that you have a bike at home, for example, by removing car roof racks, and creating 'privacy zones' on apps like Strava to avoid disclosing your location.
- **CHECK OWNERSHIP** - Ask for proof of ownership and check the bike frame number on national bike registration databases approved by Secured by Design.
- **ACT FAST** - If your bike has been stolen, contact us as soon as possible by reporting online. Give us your frame number, cycle database number, a photo and any other details and make sure you update the status on the cycle database where you registered it. The sooner we know, the sooner we can act, which might stop it being sold on.

Parcel Theft

Parcel theft, or "porch piracy," is the stealing of delivered packages, a growing problem driven by unattended deliveries, with victims urged to report to police, contact the retailer (who is legally responsible for safe delivery), and use prevention methods like video doorbells, lockers, or trusted neighbours to secure deliveries.

What to do if your parcel is stolen:

- Report to the Police: File a police report; it's a crime, and reports help track patterns, even if police can't recover the item.
- Contact the Retailer: The seller is legally responsible for getting the item to you safely. They must offer a refund or replacement if it wasn't delivered securely.
- Claim with the Courier: File a claim with the shipping company if they failed to follow delivery instructions.
- Check Payment Protection: Use credit card chargebacks (like Section 75 in the UK) or debit card chargebacks for potential recovery.



How to prevent parcel theft:

- **Use Secure Options:** Have parcels delivered to work, a trusted neighbour, or a secure parcel locker.
- **Install a Video Doorbell:** Get instant alerts and evidence for police.



- **Choose a "Safe Place"**: Instruct couriers to leave packages in a discreet, unseen spot.
- **Track Deliveries**: Know when your package arrives and arrange for someone to be home or pick it up quickly.
- **Use a Parcel Box**: Install a secure, lockable box for deliveries.

Fit & Fed Christmas Special

Southwye Police Boxing Academy, Hinton Community Centre – 27th Dec, 2nd & 4th January



We're back for **Christmas 2025** - and this year, it's bigger and better than ever!

The **Southwye Safer Neighbourhood Team** has teamed up once again with **Southwye Police Boxing Academy**!

But that's not all... we've added an **exciting new activity**!

✨ Joining us this year:

✓ **Dirty Feet (Parkour)**

✓ The return of **Melody Dance**

✓ PLUS the **Southwye Police Boxing Academy**

Just like before:

✓ **FREE sessions for all children**

✓ **FREE packed lunch to take home**

✨ **Spaces are limited and first come, first served!**

If you're not 100% sure you can attend, please don't book—let's keep spots open for those who can.

Neighbourhood Matters

Sign up to Neighbourhood Matters your brand-new community messaging service.

Neighbourhood Matters enables residents, businesses and community groups to keep in touch with local policing teams. You can choose exactly what type of alert you wish to receive and how you receive them, whether that be by email, text or telephone.

Sign up now at: www.neighbourhoodmatters.co.uk

